

6 Center Street
Prospect, CT 06712

Prospect Senior Center

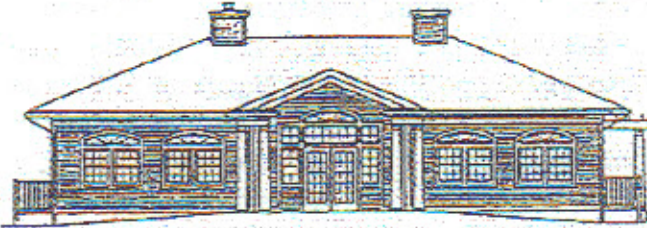
(203) 758-5300
(203) 758-3837 Fax

STAFF

Lorraine Morris
Betty Lukeski

STAFF

Susan DaSilva



Lucy Smegielski
Director - Editor
Municipal Agent - Town of Prospect



February 2012



Highlites

From the Directors Desk

Well, we have another fun-filled month for you to enjoy here at the Senior Center. We hope you will take the time to look over our newsletter to see what activities, trips or programs you might be interested in participating in. Some new additions to this month's activities are a Mardi Gras Casino Afternoon, a Valentine's Day Cookie Decorating workshop, our Valentine's Day Party, hand massages, a trip to Hart's School of Music, several Free Open Senior Swim sessions at Woodland High School, a Winter "Energy Saving" Bingo, a seminar on nutrition and one on ID fraud. We have trips going out this month to Nelson Hall @ Elim Park in Cheshire, the Warner Theater, the Chocolate Expo, the UCONN Women's Basketball games and the Connecticut Flower Show. Surely, you will find something of interest to you! Don't hesitate. Join the fun and sign up for some of our activities. I would like to remind everyone that our annual St. Patrick's Day party will be held on Thursday, March 15, 2012 at 11:30am. This event always fills up quickly. If you are interested in attending, sign up as soon as possible and PAY. We cannot hold your seat without payment.

Several people have been asking me about income tax preparation help. Further in this newsletter you will find an article on these services being offered free of

charge at the Western Connecticut Area Agency on Aging. They are located in Waterbury just over the Prospect line. We highly recommend the services they provide here. If you need income tax preparation help, read the enclosed article as to what you need to bring with you and then give them a call for an appointment. Naugatuck Savings Bank is awarding \$50,000 to various non-profit organizations in this area. Account holders of the bank will be deciding by a vote, how this money gets dispersed. If you are a NSB customer we ask that you consider casting your vote for the Prospect Senior Center. You get one vote per account that you have at the bank. The maximum amount an individual organization can be awarded is \$5,000. We would be happy with any amount. We are on a town budget so our finances are very limited. The tax payers of the Town of Prospect, the Mayor and our Town Council members have been very good to the Senior Center. But, if a little extra came our way from the bank, we would like to purchase an additional cooler for storage. We could especially use the extra refrigeration for our big parties when we are always scrambling to find space to refrigerate everything. Right now we only have one refrigerator in our kitchen to handle the heavy volume of people we serve everyday here at the Center. So, if you are a NSB customer, please consider casting

February Issue

your vote for the Senior Center either on-line or at any one of their many branch offices. Thank you.

Naugatuck Savings Bank recently awarded our pool players a \$200 donation to help cover the costs of some new shirts. The pool players wanted these monogrammed shirts to wear when they host pool tournaments here and when they get invited to play elsewhere. The remaining \$350 for the shirts came from donations that we received when Jack Leary recently died. Jack was an avid pool player who was here every day playing and laughing with all his pool buddies. The Leary Family asked that memorial donations be made in his name to the Senior Center. I think Jack would be thrilled to know that these donations were instrumental in getting all his pool "buddies" new shirts. We are very grateful to Naugatuck Savings Bank for their donation and to the Leary Family for thinking of the Senior Center in their time of grief and pain. We will all miss this very special guy!

We also received some memorial donations recently in memory of Bud Johnson. The "love of Bud's life", Marie Delage, asked that donations be sent to the Senior Center in Bud's name. We received over \$500 in donations in memory of this great guy. This money went into our Activity Fund to help sustain our many programs and activities here at the Senior Center. We thank Marie and Bud's family for their thoughtfulness. We think Bud would be happy with their decision.

Recently, we have had a number of episodes where too many people have gotten on to our elevator at the same time. When this happens, the elevator door closes and the elevator, sensing that it is overloaded, does not move. We then have several people stuck in the elevator. This has happened four times recently. Of

course, the distressed elevator riders push the emergency button which then summons the police, the fire engine, the EMT's and the Mayor. PLEASE, PLEASE, PLEASE-no more than four people on the elevator at one time. It is very disruptive and expensive to have all these emergency personnel dispatched here. If people insist on overloading the elevator and having all these emergency people summoned then you might just find yourselves splitting the bill to cover these emergency services to get you out of the elevator. Please remember that, the next time you're thinking of fitting in just one or two more people on to the elevator. Thank you for your cooperation in this situation.

Once again I'd like to remind you that we welcome all your ideas and input for new programs, activities, seminars, workshops and places to visit. We have used many of your ideas and suggestions in the past with great results. Do not hesitate to let us know if there is anything you would like to see added to our calendar.

In closing, let me leave you with this thought...
"If you want to feel rich, just count all the things you have that money can't buy."

Until next month...

Lucy



WINTER WEATHER POLICY

In case of inclement weather this winter season, please tune in to your local television or radio stations for cancellation or delayed opening announcements. You can get storm information on TV Channels 3 & 8 and on WTIC 1080 radio. We follow the Prospect school district (Region 16) policy. If schools are closed for our district, the

Senior Center is also closed and there is no bus service available through the Senior Center that day. When Region 16 calls for a delay in school opening, the Senior Center will still be open as usual at 9:00pm. Classes and programs for that day will be held at the discretion of the instructor. Please call the Center ahead of time to see if your class or program will be held. Senior Center bus service will operate as usual on these days.